

# Rubilux

## MULTIPURPOSE WALL SEALER



Rubilux wall sealer an alkali resistant primer cum sealer based on speciality Nano acrylic binder. It prevents efflorescence in the surface by sealing the porosity of the substrate.

### PRODUCT BENEFITS:

#### GOOD OPACITY

Provides good wet and dry opacity to the substrate by having Nano binder particles.

#### ENHANCED SEALING PROPERTY

It provides very good sealing property to the base coat by intruding into the porous surface making alkali resistance primer.

#### EXCELLENT BASE COAT

It provides excellent base coat than other exterior primers for the top coat to perform over years of exposure. Topcoat coverage increased up to 10% from the other conventional primers.

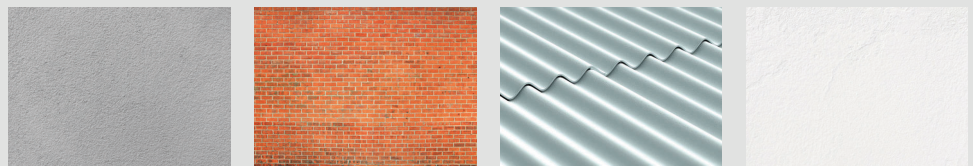
### PRODUCT FEATURES:

#### OUR PACKS



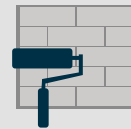
The paint has a shelf life of 3 years from the date of production when stored in original, tightly sealed containers. Avoid storing it in direct sunlight or areas with excessive heat.

#### SUGGESTED USAGE



Rubilux Grand Wall Sealer can be applied to both interior and exterior concrete, masonry, plaster surfaces, and brickwork. It can also be utilized on fresh or processed sand substrates.

#### COVERAGE



**1 COAT**  
100-110 sq.ft/ltr\*\*

Note: The actual coverage may differ from the estimated coverage due to factors such as application method, surface conditions, and roughness.

### PAINT APPLICATION METHOD

APPLICATION	STEP 1 SANDING	STEP 2 RUBILUX WALL PUTTY (OPTIONAL)	STEP 3 RUBILUX PRIMERO BRUSH/ROLLER	STEP 4 APPLICATION OF TOP COAT
DILUTION % (BY VOLUME)	SAND THE SURFACE WITH EMERY PAPER 180 AND WIPE CLEAN	40% - 50%	100%	APPLY EMULSION COAT OVER RUBILUX PRIMERO
THINNER		WATER	WATER	
APPLICATION VISCOSITY (SEC)		N/A	BRUSH 15 - 18 ROLLER 33	
RECOATING PERIOD (HOURS)		6 - 8 HOURS	4 - 5 HOURS	

Recoat period is quoted for 25°C and 50% Relative Humidity, these may vary under different conditions.

## PRE-PAINTING SETUP

### COAT

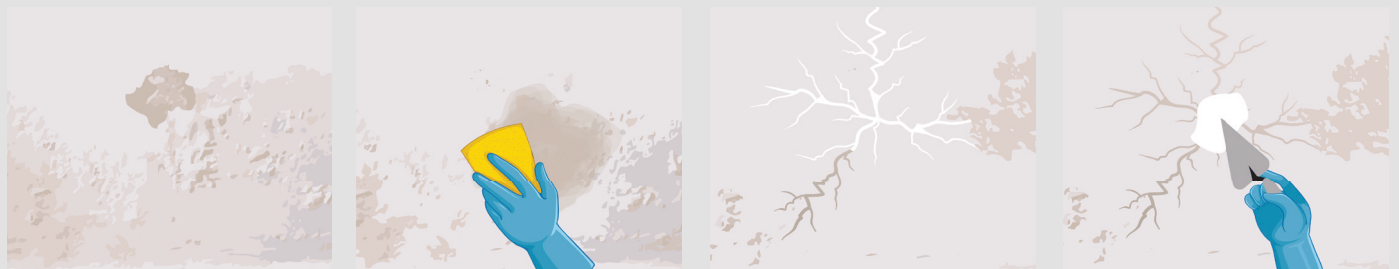
For optimal results, it is suggested that newly constructed masonry surfaces be given a full 28-day curing period before application. However, the Rubilux Grand Wall Sealer can still be applied on freshly laid concrete.

### CLEANSING

Before application, make sure the surface is free from dirt, loose plaster, powdery residue, oil, grease, and other contaminants. Thoroughly remove any existing fungus, algae, or moss with vigorous wire brushing and cleaning with water.

### REPAIRING FOR SPLITS

To address surface imperfections such as holes and cracks, use Rubilux Crack Seal for cracks up to 3mm wide or a mixture of white cement and fine sand (in a 1:3 ratio).



## SUPPORTING INFORMATION

### SPECIALIZED SEALER

The Rubilux Grand Wall Sealer is a certified Sealer based on its performance in the following areas: resistance to efflorescence, alkali resistance, sealing properties, water permeability, opacity, adhesion, and ability to be applied on green/fresh plaster.

### AFTER-PAINTING MAINTENANCE

Apply an emulsion layer over the Grand Wall Sealer. If there is a delay before applying the emulsion layer, make sure to mix Bio Block with the primer to prevent the growth of algae.

### PRECAUTIONS:

- Do not apply if the ambient temperature is below 10°C or if it is expected to drop to this temperature within 4 hours of application.
- Avoid over-thinning or over-extending the brush.
- Stir thoroughly and strain the product before use.

### SAFETY INFORMATION:

- Store the product with a tightly closed lid in a cool and dry place, upright.
- Keep it out of reach of children and away from food items.
- If ingested, it can be harmful and immediate medical attention should be sought.
- Wear eye protection during application and rinse eyes immediately with plenty of water in case of contact. Seek medical advice.
- Wash skin immediately with soap and water if it comes into contact with skin. Get medical attention if irritation persists.
- It's recommended to wear a suitable nose mask during sanding and surface preparation to prevent dust inhalation.
- Do not dispose of leftover paint in drains or water sources.
- In case of spills, contain the spillage using sand or earth.
- This product does not contain added Mercury, Arsenic, or Chromium.