

GRAND



Rubilux grand is a superior weather guard emulsion for exterior wall finish with speciality acrylic combined with water repellence additives and excellent anti-algal features.

PRODUCT BENEFITS

WEATHER PROOF

Grand is based on special acrylics with excellent adhesion to exterior walls that imparts protection against high rainfall and highly humid regions

ANTI-ALGAL FEATURES

Grand provides excellent protection against algal and fungi growth by having speciality preservatives with good compatibility against algae

PROTECTION AGAINST ULTRA-VIOLET

Grand provides an excellent sheen finish to the exterior walls that prevent u-v radiation through the paint film and avoid fading of colours. This makes a long-lasting film.

PRODUCT FEATURES

LONG LASTING



*Based on real case results.

OUR PACKS



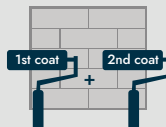
Paint life: The products have a 3-year shelf life from the date of manufacture, providing you store them in original containers that are tightly shut and away from direct sunlight and excessive heat.

COVERAGE

On regular masonry surface by brushing



1 COAT
10 - 13 sq.m/ltr**



2 COATS
5 - 6 sq.m/ltr**

The quoted coverage can vary depending on the application method and surface condition.

COLOURS OFFERED

1000+*



Presently available in more than 1000 shades as per the Ruby Paints Colour Sheet.

FINISH



✓ SMOOTH

See sheen levels in technical details

PAINT APPLICATION METHOD

APPLICATION	STEP 1 RUBILUX PAINTS WALL PUTTY (OPTIONAL)		STEP 2 RUBILUX GRAND SHINE BRUSH/ROLLER/ SPRAY		APPLICATION OF PRIMER IS NECESSARY	STEP 3 FIRST COAT GRAND SHINE BRUSH/ROLLER/ SPRAY		STEP 4 SECOND COAT GRAND BRUSH/ROLLER/SPRAY	
	PRODUCT CODE								
THINNER	WATER		WATER			WATER		WATER	
DILUTION % (BY VOLUME)	BASED ON NECESSITY TO FORM PASTE		BRUSH 90 - 110 ROLLER 90 - 110 SPRAY 40 - 45			BRUSH 40 ROLLER 40 SPRAY 40		BRUSH 40 ROLLER 40 SPRAY 40	
APPLICATION VISCOSITY (SEC)	PASTE FORM		BRUSH 15 - 18 SPRAY 33			BRUSH 25 -35 SPRAY 25 - 35		BRUSH 25 - 35 SPRAY 25 - 35	
RECOATING PERIOD (HOURS)	4 HRS		4 HRS			4 - 6 HRS		4 - 6 HRS	

Recoat time is quoted for 25°C and 50% Relative Humidity, which may vary depending on your conditions. Some shades of paint may require 3 or more coats for maximum opacity.

PRE PAINTING STEPS

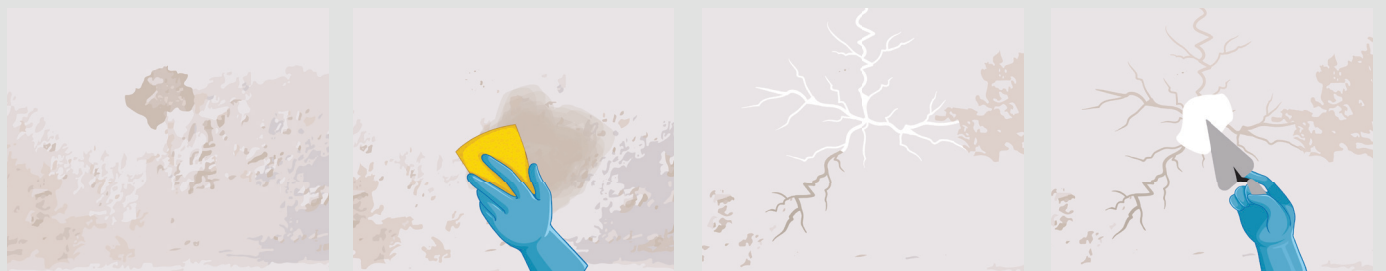
New masonry surfaces must dry and cure for a full 28 days. It's best to wait 28 days for the curing process to finish before you start using the new masonry surface.

The surface should be free from any loose paint, dust or grease. Growth of fungus, algae and moss are removed by wire brushing and water.

If you're filling cracks up to 3mm, use Rubilux Crack Seal.

In order to fill large holes and dents, paint on a layer of Rubilux Wall Putty or mix a little white cement with some fine sand in the ratio 1:3.

Rubilux DampProof is the perfect product for surfaces that are continuously exposed to excess moisture. This product should be applied before top coat application.



POST PAINTING CARE

Prevent algae and fungi from growing on the surface of the painting.

Clean the painting every six months to keep it looking great.

PRECAUTIONS

- ◆ Tinted paints need to be shaken for an extended time after tinter addition as well as before use.
- ◆ For surfaces that are especially coarse, brush application is recommended for optimal coverage. Paint will not cover cracks, and proper care should be taken to make sure those are sealed first and then topcoat is applied.
- ◆ For surfaces containing heavy algae infestation, BIO BLOCK must be applied before proceeding with the next step.
- ◆ One coat of topcoat should not be left exposed in the monsoon season, even if it's only primed or prepped beforehand.
- ◆ To ensure best performance, ensure your surface is completely dry after applying a proper primer coat which minimizes microbial growths on wet surfaces.
- ◆ Paint after 24 hours diluted can also become vulnerable to microbial attacks because of the watered down content.
Caution: do not dilute paint with chlorinated water

SAFETY MEASURES

- ◆ Avoid storing the container with too much food in an inverted position, as large quantities of food can easily spoil.
- ◆ Keep out of reach of children and pets.
- ◆ Do not ingest. If swallowed, seek immediate medical attention.
- ◆ Wearing eye protection is an important safety precaution, especially when applying paint. If you get any of the paint in your eyes, immediately rinse them with plenty of water.
- ◆ If you have skin contact with this product, wash the skin with soap and plenty of water. Seek medical attention if irritation persists.
- ◆ When you are using the product, make sure to avoid breathing in the fumes. It is also recommended to wear nose pads while sanding and spray painting.
- ◆ After finishing painting, do not pour leftover paint down the drain or in water courses.
- ◆ If a spill occurs, you can use sand or earth to contain it.